

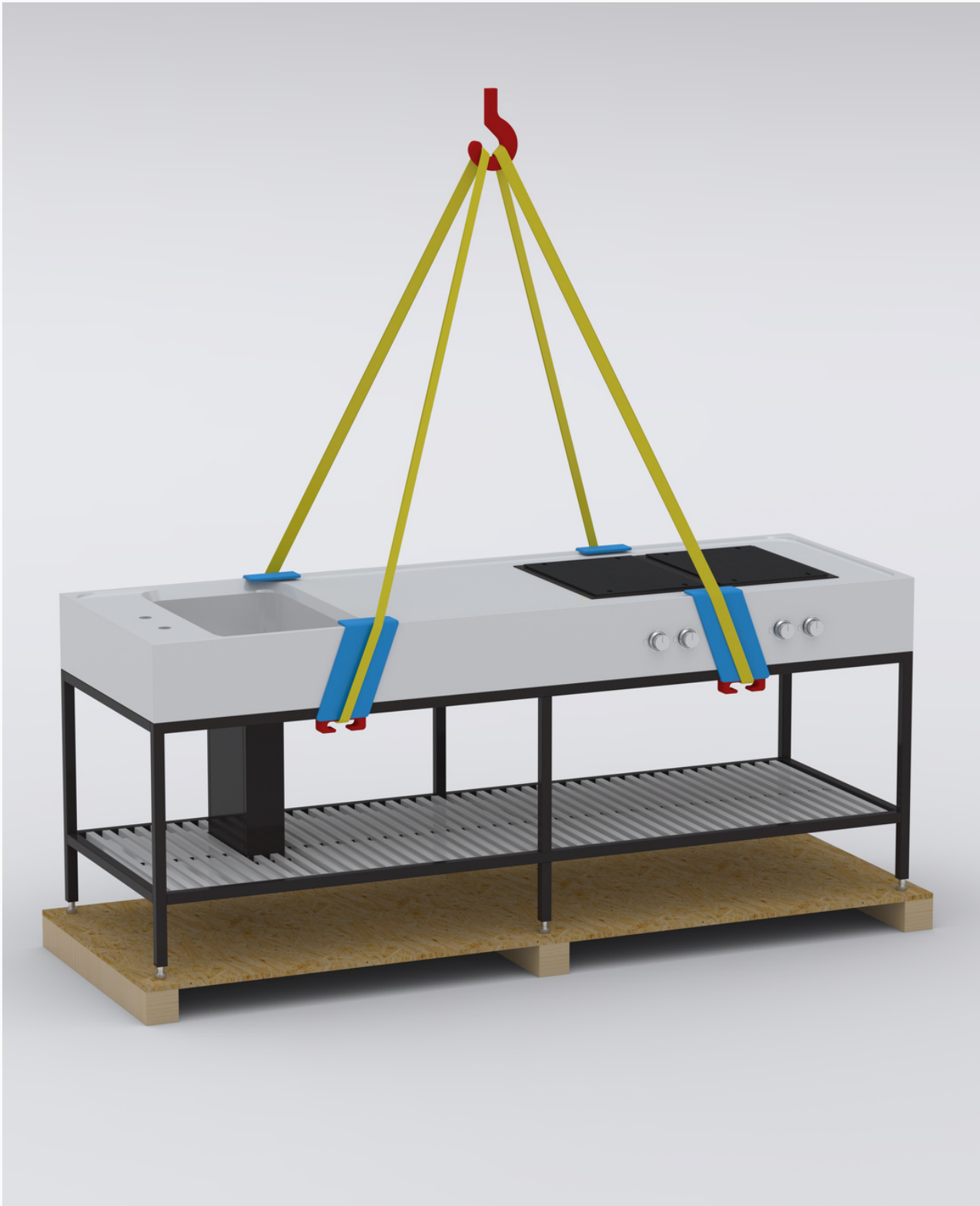
TERRENERE

CONCRETE OUTDOOR KITCHEN

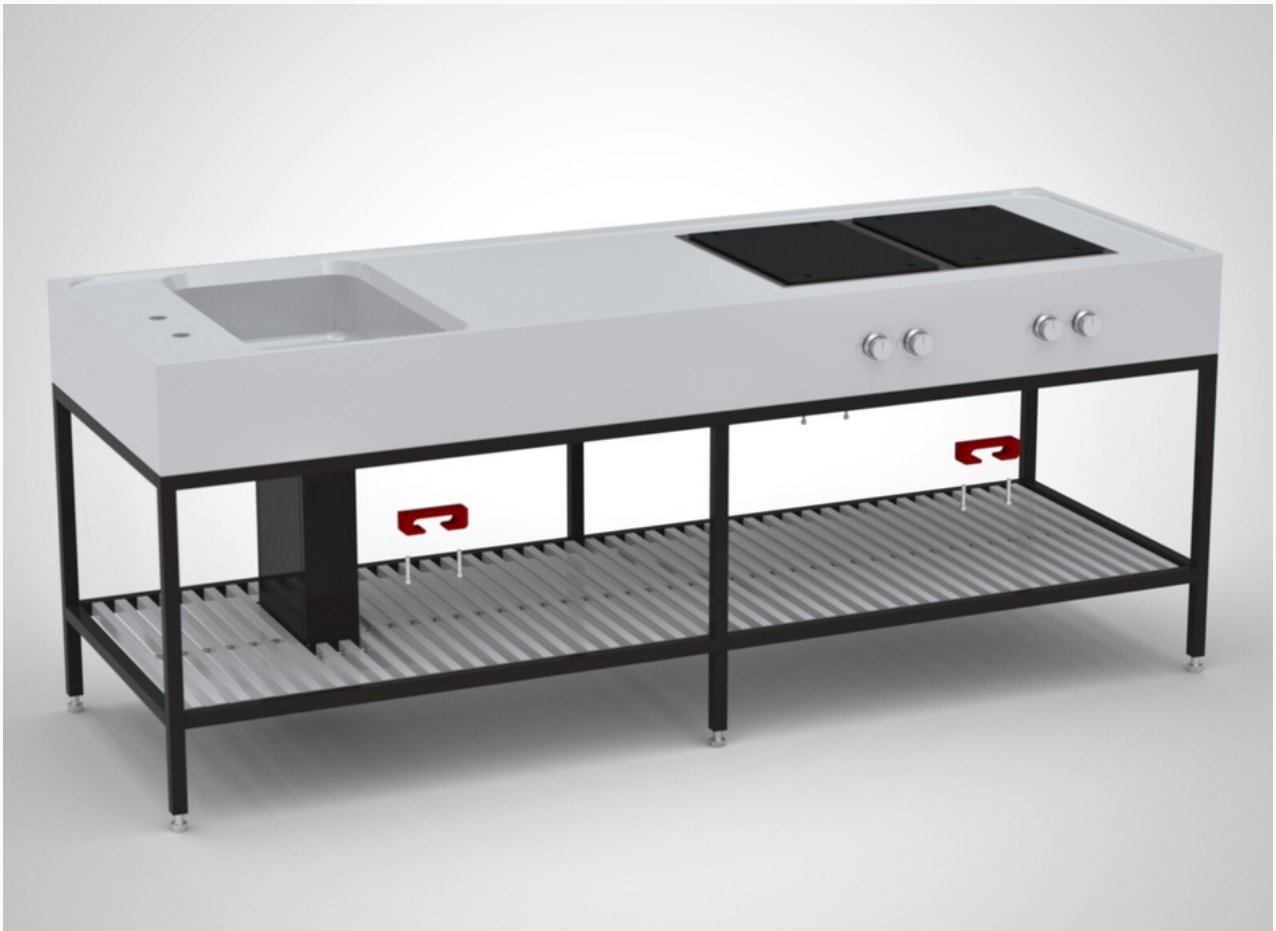
Installation guide



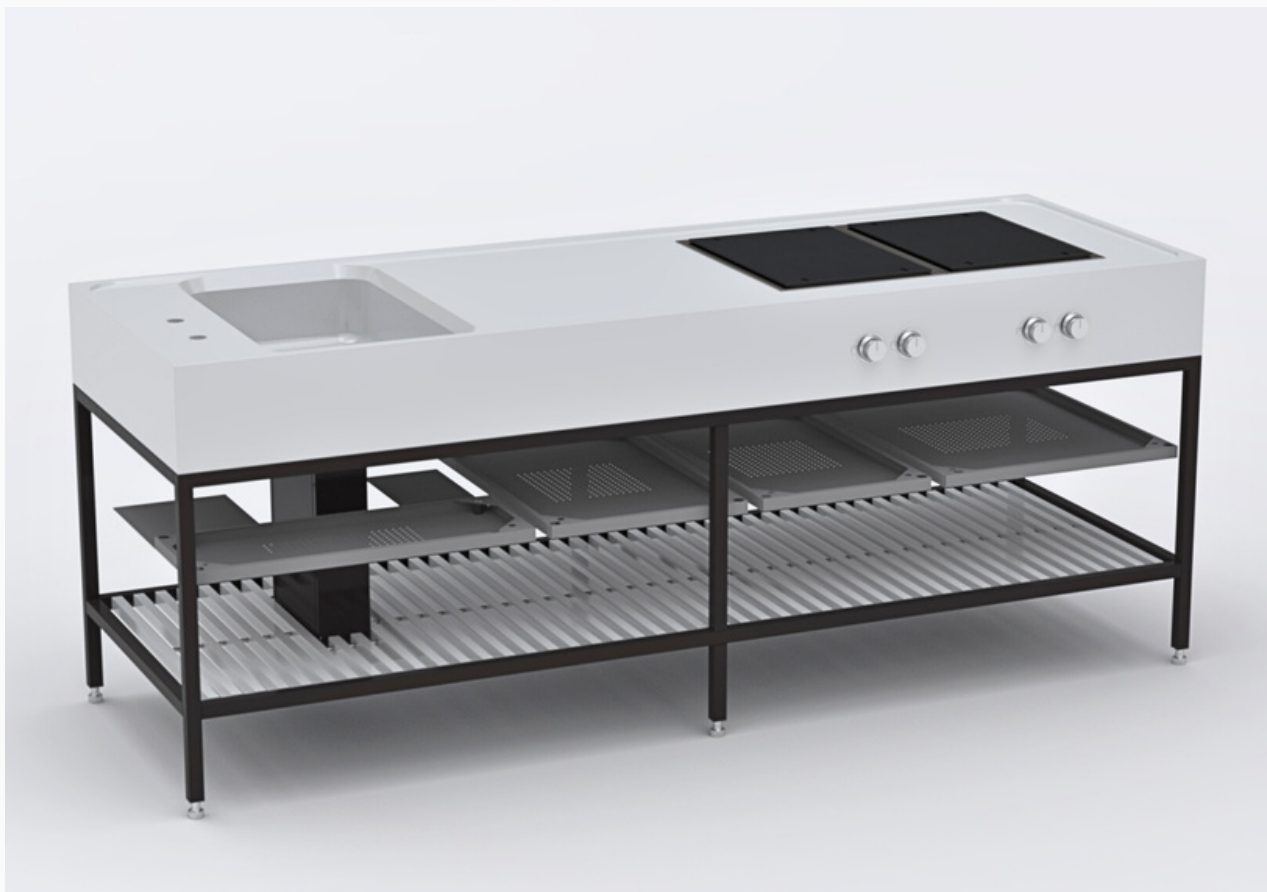
Open the wooden case by removing the screws along the perimeter of the panels



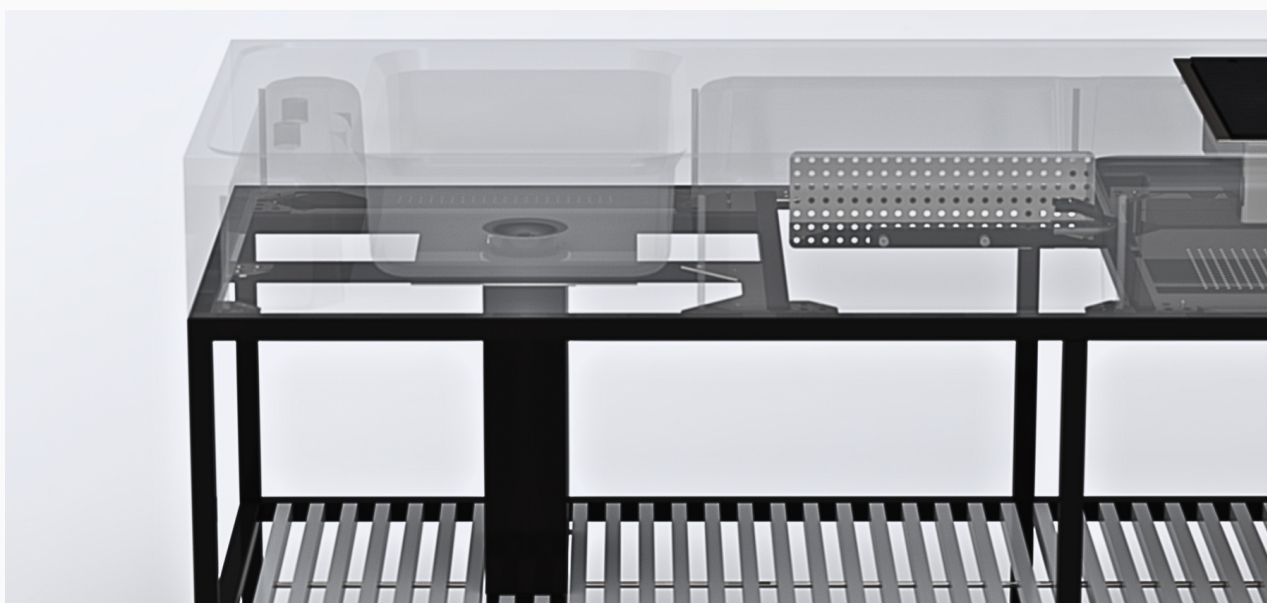
Sling the kitchen with lifting straps by passing through the appropriate position handles and taking care to place the protective material between the straps and the concrete top. For enclosed kitchens, the handles are at the bottom.



Place the kitchen in position as shown in the plan previously sent for utility arrangements. Adjust the feet with the 16 wrench. The kitchen should be adjusted to a height of 90 cm. The adjustment allows a range of +/- 1 cm



To access at the compartment under the concrete top remove the panels through the screws placed at the corners.



After removal of the closure panels, there is access to the under-top compartment for connection of utilities. All utilities must convey through the tunnel

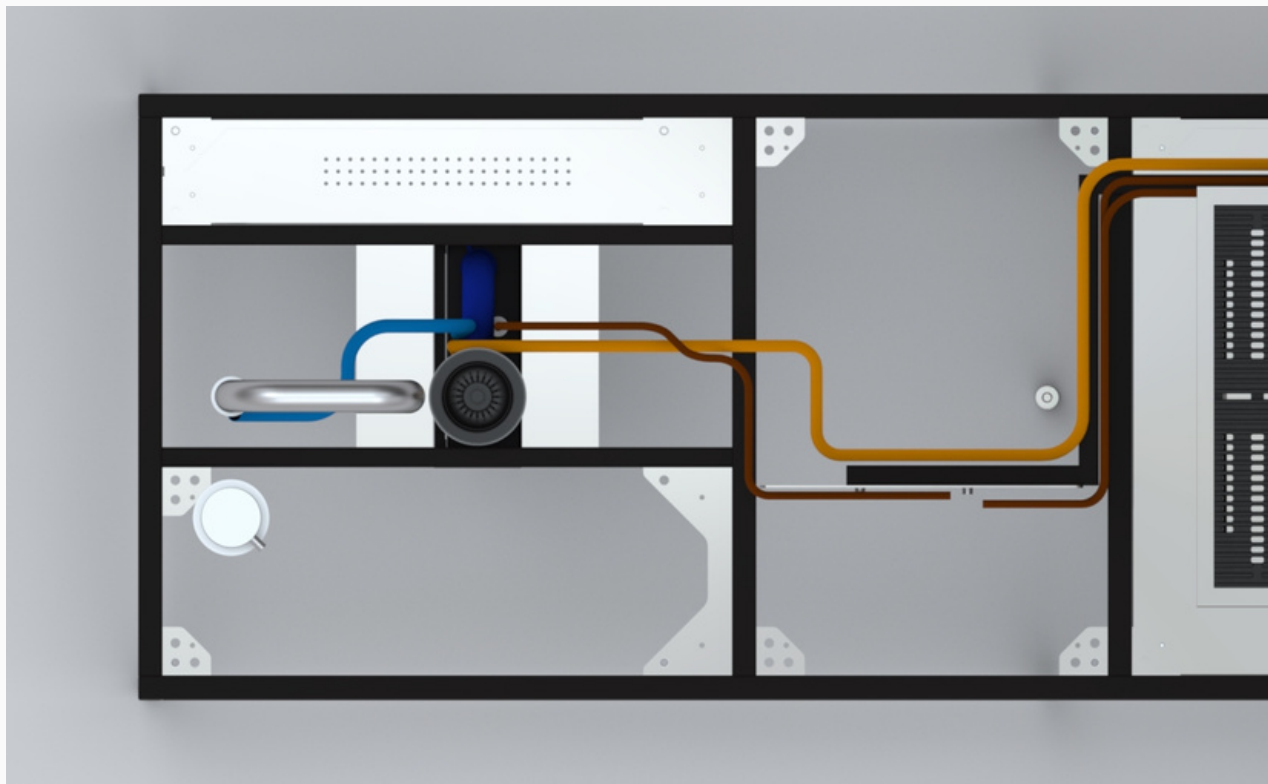
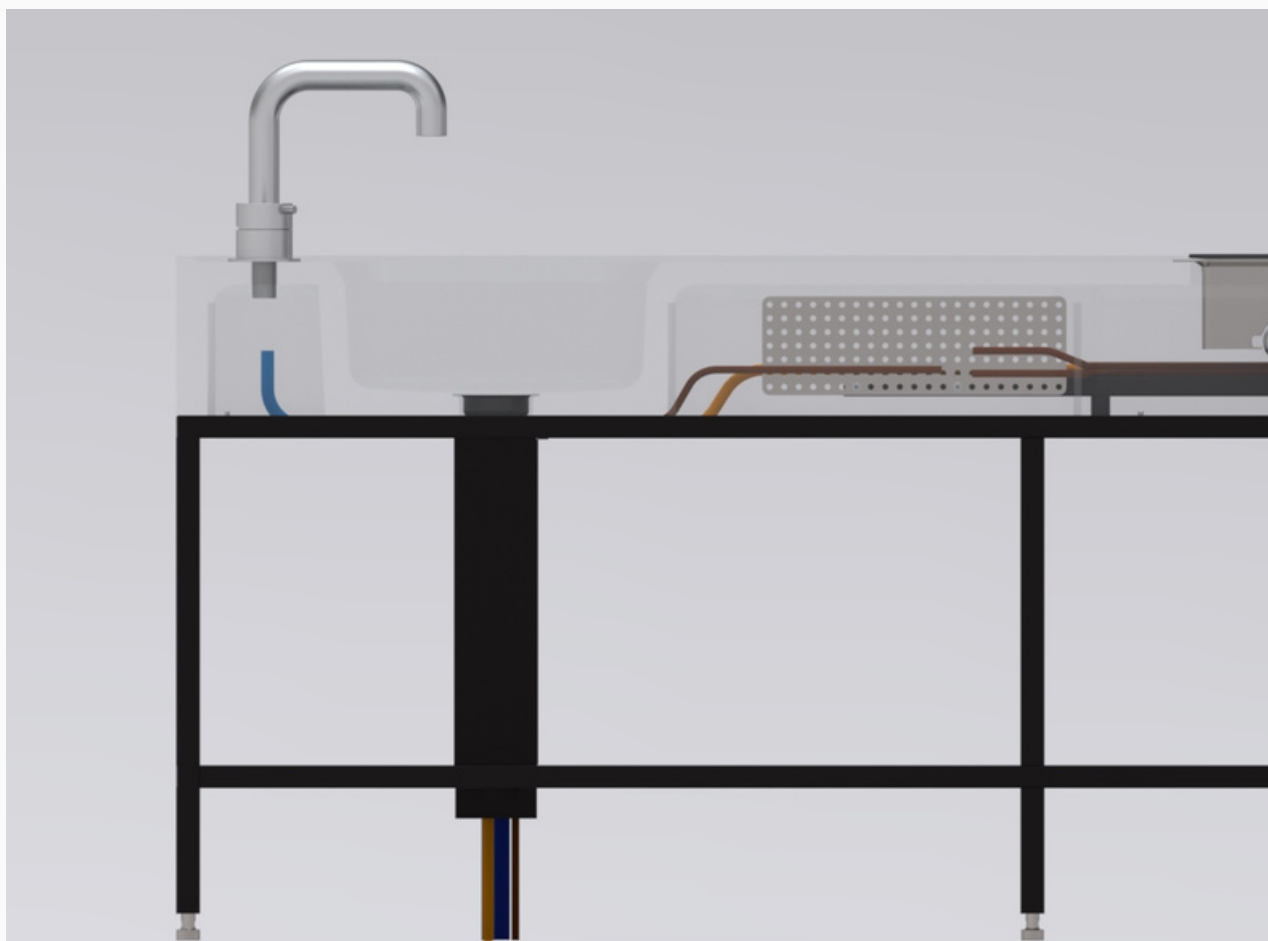


Remove the side panel of the tunnel through the upper screws so as to have access to the power supply, water supply, electricity, gas, water drain.

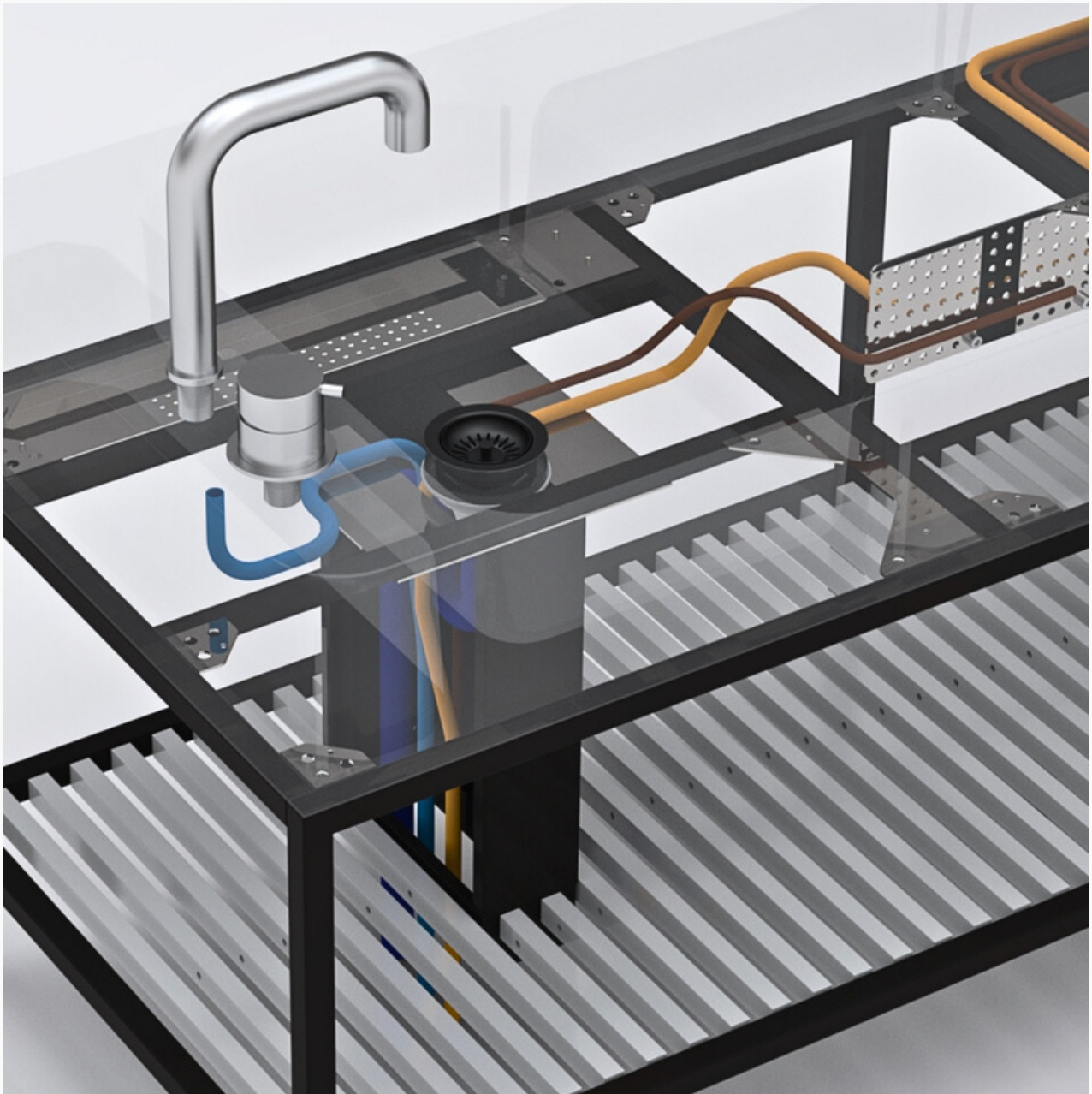


The pipe passage will be through the tunnel under top, using hoses max diam. 25 mm. The passage is between top and sheet metal cover (light blue tube in the picture).



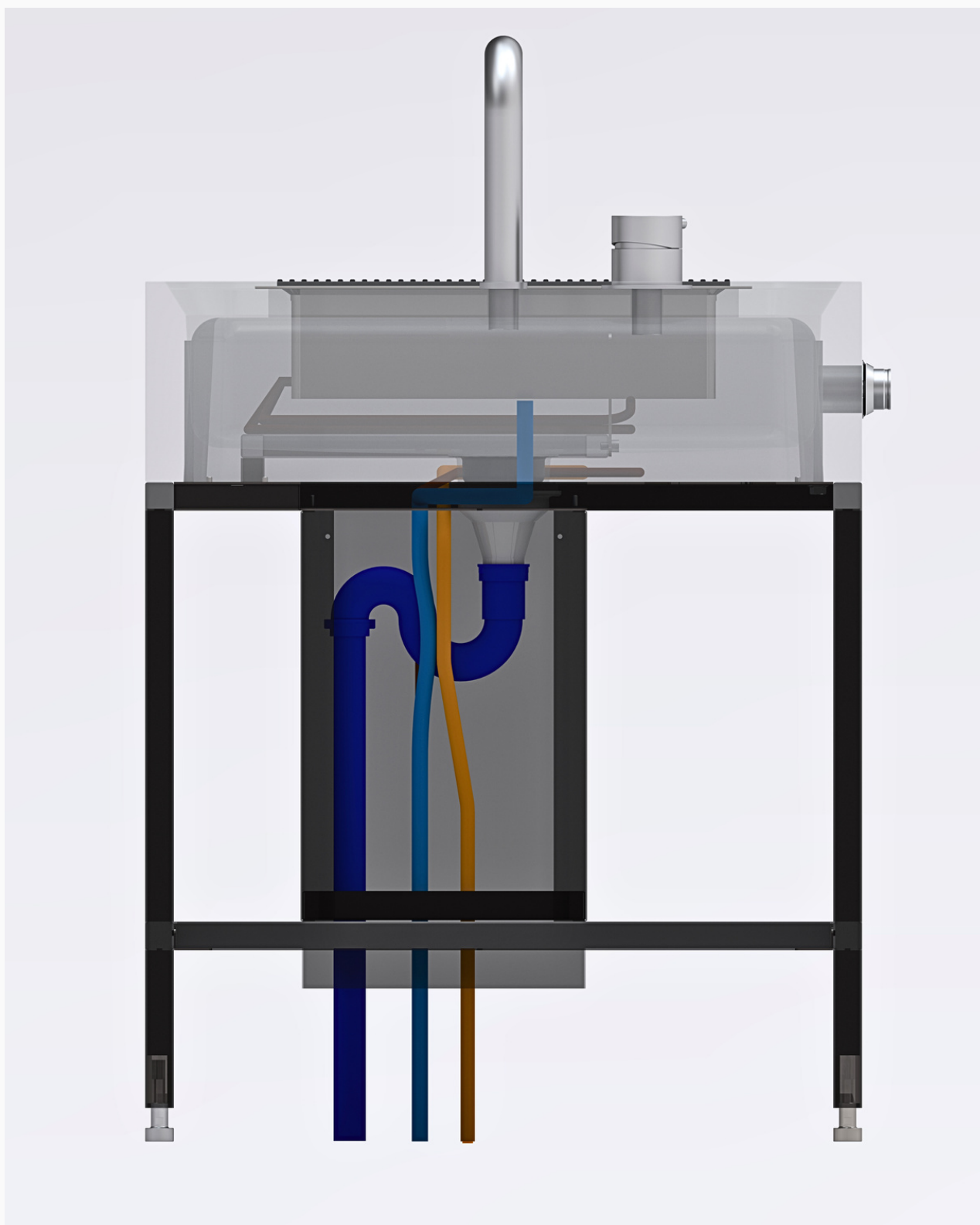


Install the tap and mixer following the manufacturer's instructions, connect hot and cold water via hoses placed between the concrete top and the thickness of the frame reaching the tunnel for the final connection.

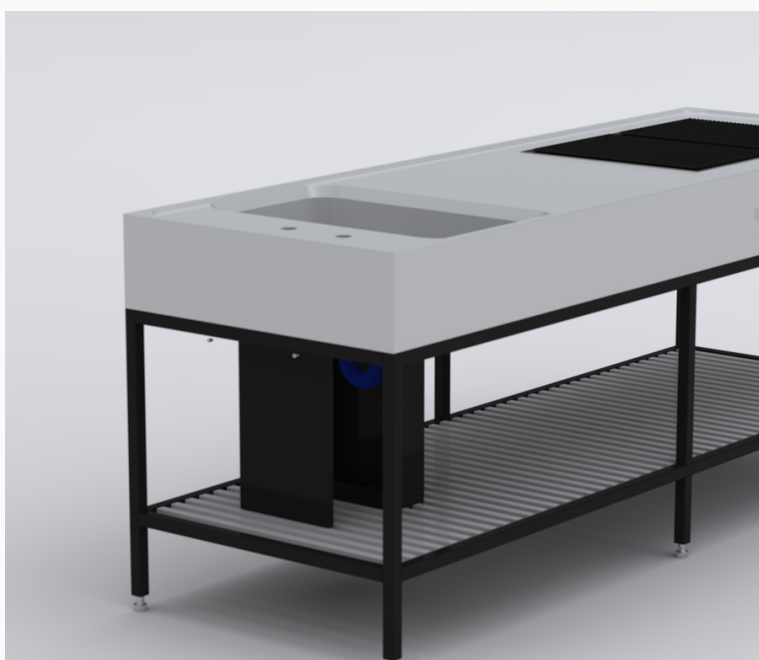
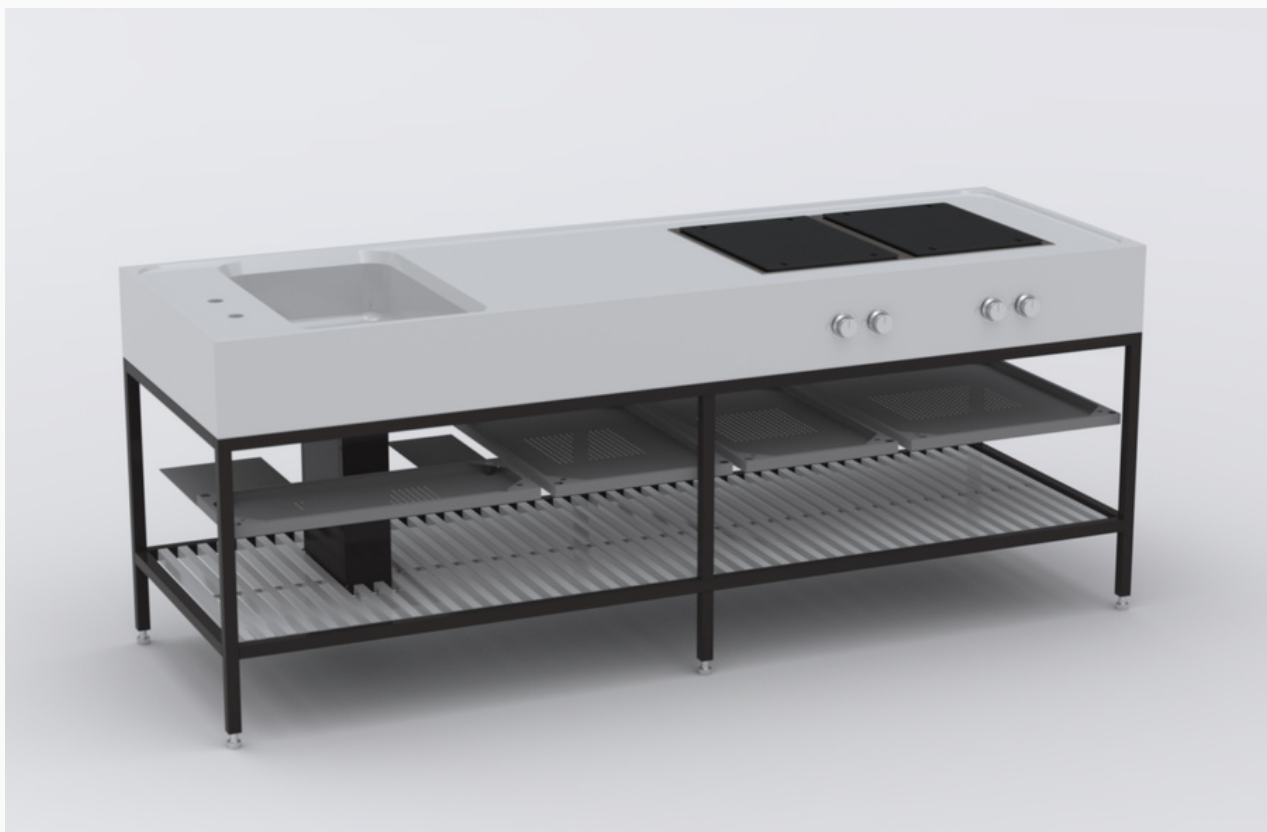


Install the induction/gas cooktops following the manufacturer's instructions by feeding them through electric cables (brown tube in the picture) and gas tube (yellow tube in the picture) from the tunnel to the wiring plate located vertically in the under-top compartment. The tubes should run in the frame space, adjacent to the concrete top.

IMPORTANT: Do not leave wires/wiring harnesses resting on the panels of closure below. All wiring must be anchored to the perforated plate.



Install the drain pipe with the siphon (dark blue tube in the image).
Check the connections and perform a drain test before closing the side panel.



Reinstall all the closure panels.



The end of the tunnel is located below the low shelf of the kitchen. It is two parts that must be joined together through the fastening screws.



TERRENERE

is a registered trademark by HANGAR77 s.r.l.
All right reserved.

HANGAR 77 s.r.l.
Via Brodolini 77 – 60030
Serra de' Conti (An) – Italy
VatIT02880580424

Mail info@terrenere.kitchen
Pec hangar77@sicurezzapostale.it
Tel +39 0731 381855
